

INDOFINE CHEMICAL COMPANY, INC.  
121 Stryker Lane, Bldg. 30  
Hillsborough, NJ 08844  
chemical@indofinechemical.com

Phone: (908) 359-6778

Fax: (908) 359-1179

## CERTIFICATE OF ANALYSIS

Cat No.: 26-3391

Product: **3,4-DIMETHOXY-4'-FLUOROCHALCONE**

CAS Number: [28081-14-3]

Lot Number: 1005034

Chemical Formula: C<sub>17</sub>H<sub>15</sub>FO<sub>3</sub>

Molecular Weight: 286.31

Melting Point: 86-88°C

Appearance: Yellow powder

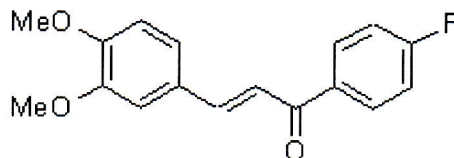
TLC: Hexane : Ethyl acetate (7:3)

Solubility: Soluble in chloroform

Moisture (KF): 0.28%

Storage: Cool dry place

Assay (HPLC): 99.0%



26-3391



# INDOFINE Chemical Company, Inc.

121 Stryker Lane, Bldg. 30, Suite 1 • Hillsborough, NJ 08844 • U.S.A.

Phone: (908) 359-6778 • FAX: (908) 359-1179

website: [www.indofinechemical.com](http://www.indofinechemical.com)

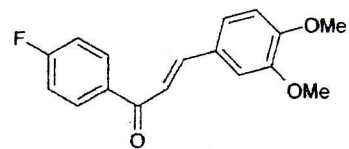
e-mail: [chemical@indofinechemical.com](mailto:chemical@indofinechemical.com)

## HPLC ANALYSIS

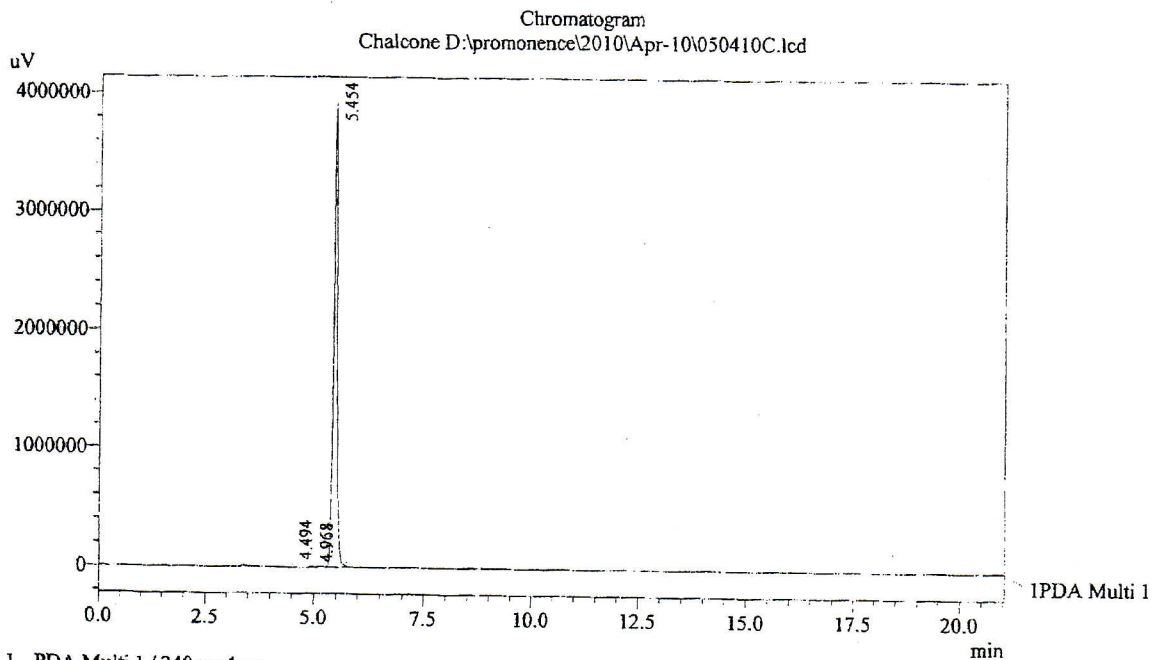
Date Acquired : 4/5/2010 12:41:58 PM  
Acquired by : Madhuri  
Sample Name : Chalcone  
Sample ID :  
Injection Volume : 20 µL  
Data Filename : 050410C.lcd  
Method Filename : Linear Isocratic.M.lcm

Cat. No.: 26-3391  
Product: 3,4-Dimethoxy-4'-fluorochalcone  
Lot No.: 1005034

Description:  
Column : Inertsil C-18, 250X4.6mm 5.0µm  
Flow : 1.000mL/min.  
Mobile Phase : A(20% Water 0.05% TFA) : B(80% ACN)



Dimethoxy-4'-flurochalcone



1 IPDA Multi 1 / 240nm 4nm

PeakTable

PDA Ch1 240nm 4nm

Peak#	Ret. Time	Area	Height	Area %
1	4.494	180967	27676	0.791
2	4.968	36050	5607	0.157
3	5.454	22675536	3922148	99.052
Total		22892553	3955430	100.000



# INDOFINE Chemical Company, Inc.

121 Stryker Lane, Bldg. 30, Suite 1 • Hillsborough, NJ 08844 • U.S.A.

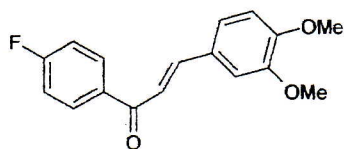
Phone: (908) 359-6778 • FAX: (908) 359-1179

website: [www.indofinechemical.com](http://www.indofinechemical.com)

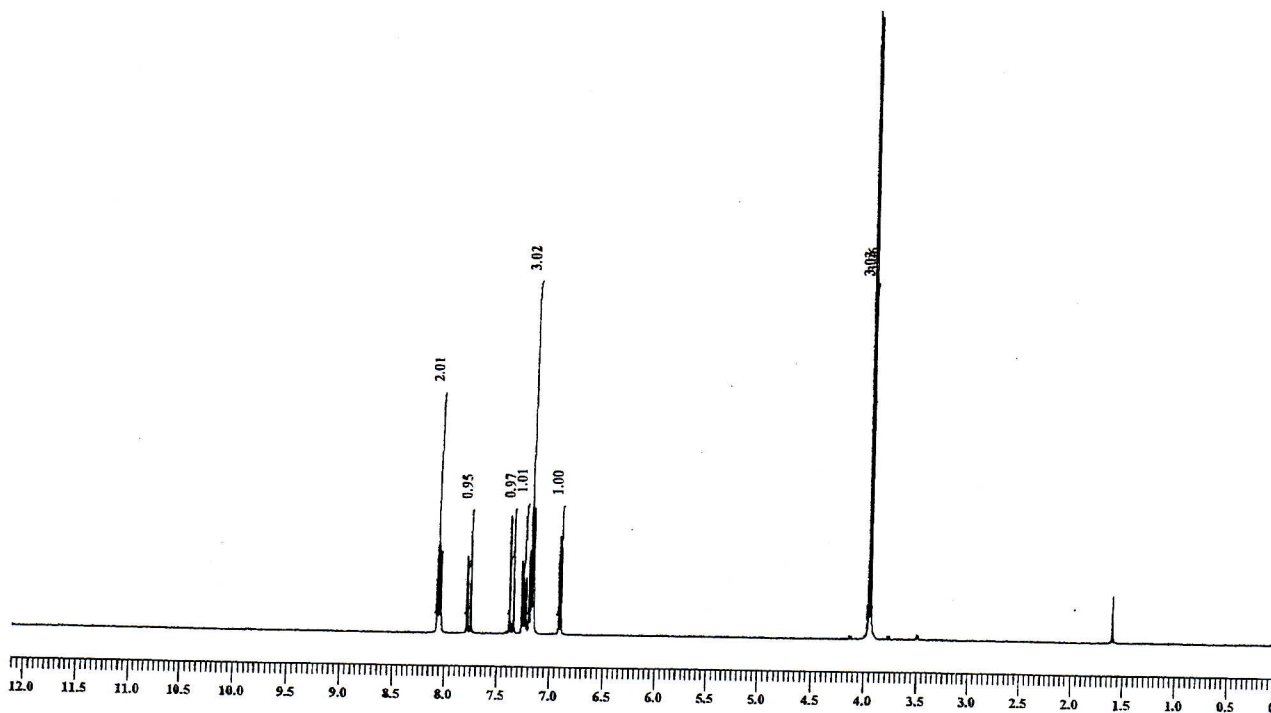
e-mail: [chemical@indofinechemical.com](mailto:chemical@indofinechemical.com)

Cat. No.: 26-3391  
Product: 3,4-Dimethoxy-4'-fluorochalcone  
Lot No.: 1005034

Methoxy 1H NMR CDCl3



3,4-Dimethoxy-4'-fluorochalcone





# INDOFINE Chemical Company, Inc.

121 Stryker Lane, Bldg. 30, Suite 1 • Hillsborough, NJ 08844 • U.S.A.

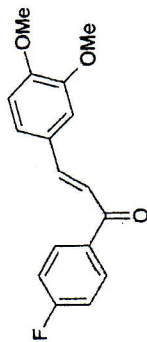
Phone: (908) 359-6778 • FAX: (908) 359-1179

website: [www.indofinechemical.com](http://www.indofinechemical.com)

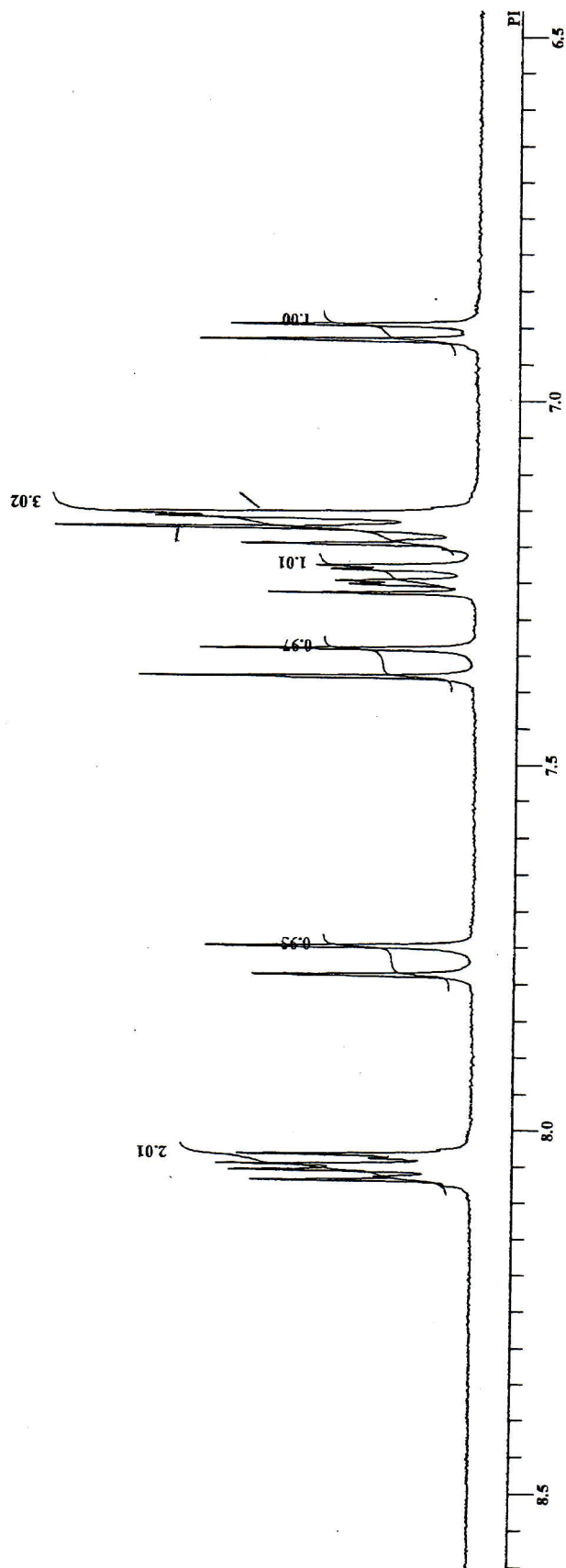
e-mail: [chemical@indofinechemical.com](mailto:chemical@indofinechemical.com)

Methoxy 1H NMR CDCl3

Cat. No.: 26-3391  
Product: 3,4-Dimethoxy-4'-fluorochoalcone  
Lot No.: 1005034



3,4-Dimethoxy-4'-fluorochoalcone





# INDOFINE Chemical Company, Inc.

121 Stryker Lane, Bldg. 30, Suite 1 • Hillsborough, NJ 08844 • U.S.A.

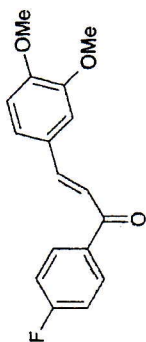
Phone: (908) 359-6778 • FAX: (908) 359-1179

website: [www.indofinechemical.com](http://www.indofinechemical.com)

e-mail: [chemical@indofinechemical.com](mailto:chemical@indofinechemical.com)

Methoxy 1H NMR CDCl3

Cat. No.: 26-3391  
Product: 3,4-Dimethoxy-4'-fluoroalcone  
Lot No.: 1005034



3,4-Dimethoxy-4'-fluoroalcone

